

**Offa's Dike
National Trail
Part 1
(Jun/July
2015)**

PART 1 – Black Mountains to Sedbury Cliffs



Photo 1: I travelled from Salisbury to Abergavenny by Train on 29/06/15. Upon arrival I followed the Beacon Way till it met with the Offa's Dike Path. Wild camped on Ysgyryd Fawr (The Skirrid).



Photo 2: Ruins of a Medieval Chapel (St Michael's Chapel) on Ysgyryd Fawr.



Photo 3: On Day 2 (30/06/15) I reach the Offa's Dike Trail then followed the trail north until I reached a suitable point which was easy to remember (Above Photo).



Photo: 4: I then doubled-back and headed south following the Offa's Dike National Trail. Photo taken looking west across Black Mountains.



Photo 5: View towards 'Table Mountain' from the Offa's Dike.



Photo 6: Looking west in direction of Black Mountains.



Photo 7: Looking east, across agricultural land, with Black Mountains behind me.



Photo 8: Looking northwards along the Olchon Valley.



Photo 9: Defensive structure on Hillfort located on trial near Upper Pen-twyn Farm.



Photo 10: View of Hill fort.



Photo 11: Possible defensive ditch on Hillfort.



Photo 12: Wild-camped in woods near the village of Pandy.



Photo 13: Day 3 (01/07/15) trail passed through welsh countryside and farm land. Passed White Castle (Castell Gwyn) along the way.



Photo 14: Approaching White Castle (Llantilio Castle). It has a complete, water filled, moat.



Photo 15: One of White Castle's towers. The castle was originally rendered with White Plaster, hence its name.



Photo 16: Photo taken as I left White Castle.



Photo 17: Signpost: 3 miles to Monmouth.



Photo 18: A duck and three ducklings, being watch intently by a cat (out of picture). Found in a stream as I walked into Monmouth.



Photo 19: Photo taken looking back towards Monmouth as I head out-of-town.



Photo 20: After climbing out of Monmouth I reached the summit of the nearby hill known as 'The KYMIN', where there is a 19th century Naval Temple built to celebrate various British Navy victories...



Photo 21: ...and a white Round House. All owned by the national trust.



Photo 22: View of the town of Monmouth, photo taken from in front of the White Round House.



Photo 23: Signpost: 12 miles to Chepstow & 3.5 miles to Monmouth.



Photo 24: Hiking towards a bridge (Bigswear Bridge) over the river Wye. Wild Camped in some woods nearby.



Photo 25: Day 4 (02/07/15) Another (Brockweir) Bridge across the River Wye.



Photo 26: River view with low cloud in the sky.



Photo 27: Dead Mole found on Path (1).



Photo 28: Dead Mole found on Path (2).



Photo 29: Spectacular view of Tintern Abbey. Photo taken from Devil's Pulpit.



Photo 30: Hiked past Quarry on the outskirts of Chepstow.



Photo 31: Ruins of an old tower or possible windmill.

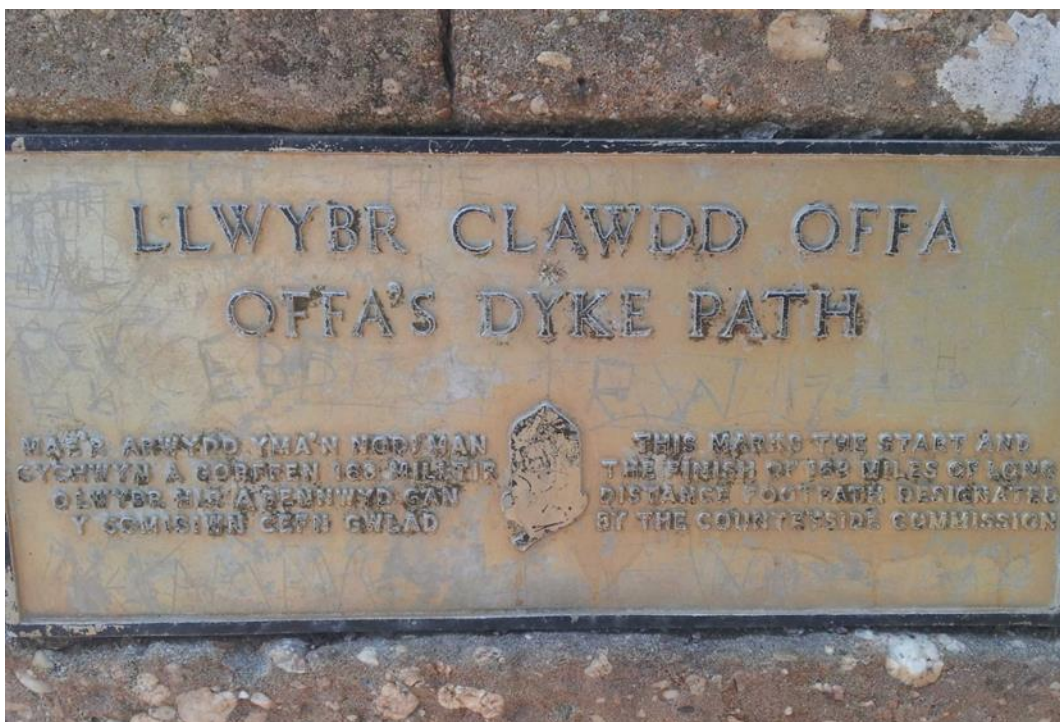


Photo 32: Sign which marks the start/end point at Sedbury Cliffs.



Photo 33: View from Sedbury Cliffs towards the Severn Bridge.

PART 2: Knighton to The Black Mountain



Photo 1: Day 1 (18/07/15) arrived in Knighton having completed part of Glyndwr's Way (Llangollen to Knighton). Clock tower and main high street @ Knighton.



Photo 2: Major Signpost outside Offa's Dike Centre: 97 miles to Prestatyn (Traeth) and 80 miles to Sedbury Cliffs. Camped at Panpwnton Farm Campsite.



Photo 3: Day 2 (19/07/15) Another view of Knighton's clock tower. I doubled back along the trail to Knighton town centre then heading south along Offa's Dike Path.



Photo 4: Signpost 1 3/4m South of Knighton and hiking in direction of Dolley Green (3m).



Photo 5: Obelisk dedicated to Sir Richard Green-Price.



Photo 6: Views of Mid-Wales agricultural landscape.



Photo 7: Segment of Offa's Dike near Hawthorn Hill.



Photo 8: Another Segment of Offa's Dike @ Hawthorn Hill.



Photo 9: Looking back at Offa's Dike from Furrow Hill.



Photo 10: More views of Mid-Wales agricultural landscape.



Photo 11: Abandoned piece of rusty farming equipment.



Photo 12: Old (collapsed) Wagon of some kind. In latter stages of decay.



Photo 13: Inquisitive cows checking out mysterious hiker.



Photo 14: Welsh agricultural landscape near Dolley Green Village.



Photo 15: More Welsh agricultural landscape near Dolley Green Village.



Photo 16: National Trails Acorn Symbol.



Photo 17: National Trail Signpost: Heading in direction of Pen Offa (1 mile).



Photo 18: More Offa's Dike & Ditch: covered in Bracken and trees.



Photo 19: Bracken covered Offa's Dike with Ditch.



Photo 20: Offa's Dike's official National Trail symbol found on gateposts.



Photo 21: Path continues through field full of sheep.



Photo 22: View of surrounding landscape near Granner Wood.



Photo 23: Deep Offa's Dike Ditch through wooded section of Trail.

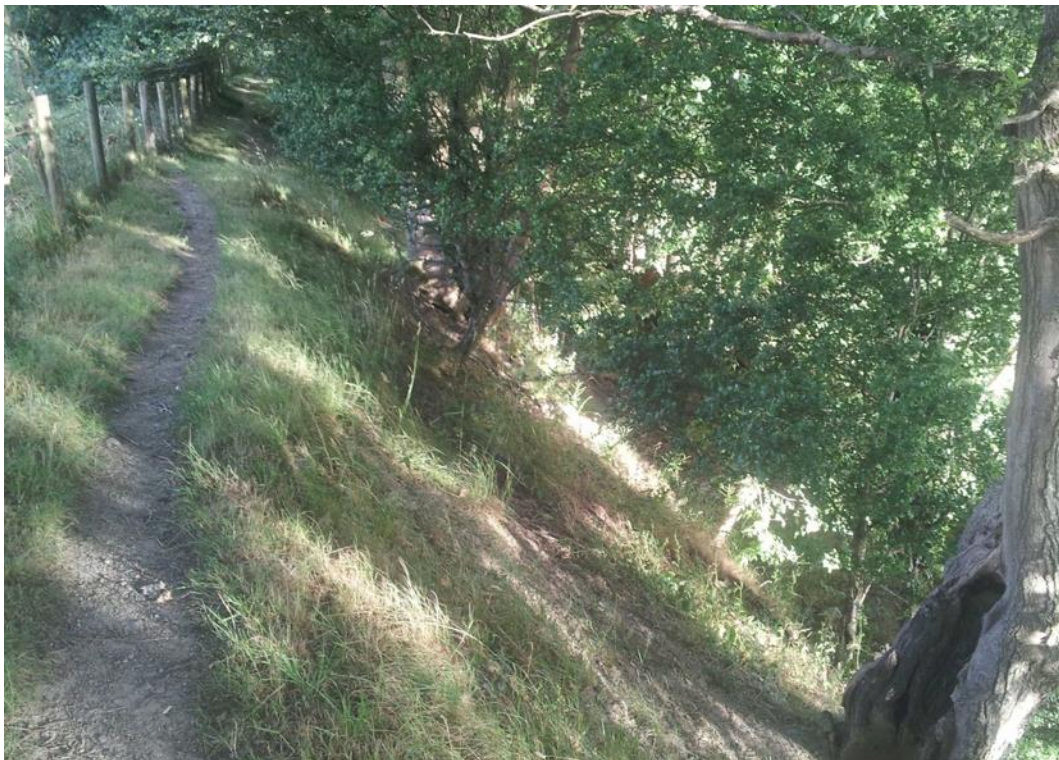


Photo 24: Offa's Dike & Ditch through wooded section of Trail.



Photo 25: Signpost: 1 mile from Granner Wood; 1.5 miles to Rushock Hill.



Photo 26: Photo taken looking towards the tree covered Burfa Bank.



Photo 27: Wild Camped under a tree on Herrock Hill (Summit: 370m/1215ft).



Photo 28: Day 3 (20/07/15) Spectacular views from Herrock Hill.



Photo 29: More views from Herrock Hill (Summit: 370m/1215ft).



Photo 30: Walking along Dyke in direction of Rushock Hill.



Photo 31: More Dike (being grazed by sheep) on Rushock Hill.



Photo 32: Even more Dike (even more sheep) on Rushock Hill. After this it was all downhill, hiking through open fields, till I reached the town of Kington.



Photo 33: Signpost in centre of Kington: 14miles from Knighton;14 miles to Hay-on-Wye.



Photo 34: View looking back towards Kington, photo taken as I hike towards Hergest Ridge.



Photo 35: View of Rainbow taken from summit of Hergest Ridge.



Photo 36: Wild Ponies grazing on Hergest Ridge.



Photo 37: More Wild Ponies grazing on Hergest Ridge.



Photo 38: Close-up of Wild Pony (with rather impressive pot belly).



Photo 39: A rather fine specimen / example of fossilized cheesecake...



Photo 40: ...The rock was deposited here during a past Ice age and is unusual when compared to the local geology.



Photo 41: The River Wye as I approach the town of Hay-on-Wye.



Photo 42: Signpost near Hay Bridge: 14 miles completed since Kington.



Photo 43: Wild-camped on the way up to the Black Mountains & Hatterall Ridge.



Photo 44: Day 4 (23/07/15) looking back at view from mountain road.



Photo 45: More views from mountain road as I look back in direction of Hay-on-Wye.



Photo 46: Offa's Dyke Stone Marker: 16 miles to Pandy.



Photo 47: Looking up at Hays Bluff (summit: 677m/2221ft) which marks the beginning of Hatterall Ridge.



Photo 48: View of surrounding countryside.



Photo 49: View looking back as I climb towards summit of Hay's Bluff.



Photo 50: Nearing summit of Hay's Bluff (677m/2221ft) looking south along Hatterrall Ridge.



Photo 51: Looking down into Olchon Valley from summit of Hay's Bluff.



Photo 52: View looking west towards the Black Mountains and Lord Hereford's Knob (Twmpa).



Photo 53: Following the path along the exposed/wind-swept top of Hatterrall Ridge Plateau.



Photo 54: View looking down into Olchon Valley and the Agricultural Landscape to the East.



Photo 55: More views of the Black Mountains.



Photo 56: Following Offa's Dike Path along top of Hatterall Ridge.



Photo 57: Photograph taken as I look back along Olchon Valley.



Photo 58: View looking down into the Vale of Ewyas where the ruins of Llanthony Priory reside.



Photo 59: Still following the path along Hatterall Ridge. 10 miles completed; 6 miles to go.



Photo 60: Looking west, from Hatterall hill, towards the Black Mountains & Brecon Beacons National Park.



Photo 61: View looking back along Hatterrall's Ridge.



Photo 62: Landscape to the east as I approach the southern end of the Ridge.



Photo 63: Landscape to the west as I approach the southern end of the Ridge.

The Offa's Dike Path National Trail is a 177-mile (285km) trail which starts at Prestatyn (North Wales) and finishes at Sedbury Cliffs near Chepstow (South Wales). The Path follows the approximate line of Offa's Dike, a 1200-year-old defensive earthwork which once marked the Western frontier of the Anglo-Saxon Kingdom of Mercia. The Offa's Dike Path involves walking / hiking across varying terrain from the challenging exposed ridges of the Clwydian Hills & the Black Mountain's Hatterrall Ridge to more relaxing walking along the towpaths of the Montgomery canal and along the riverbanks of Severn & Wye rivers. It also involves numerous steep ascents and descents such as those known as the 'switchbacks' found north of the town Knighton.

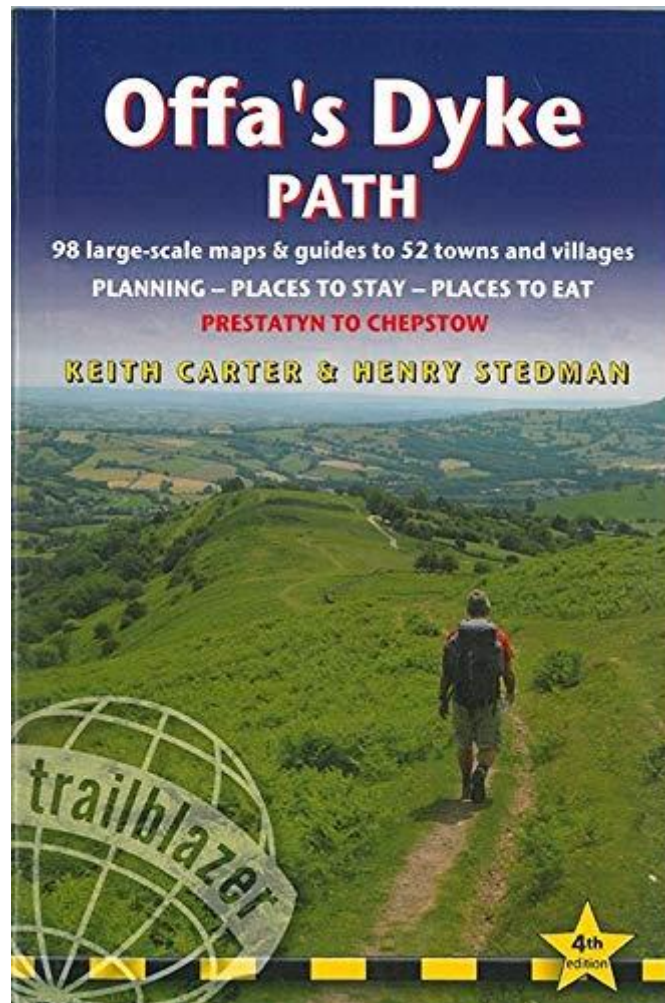
Useful Websites

National Trails Main Website: https://www.nationaltrail.co.uk/en_GB/trails/offas-dyke-path/

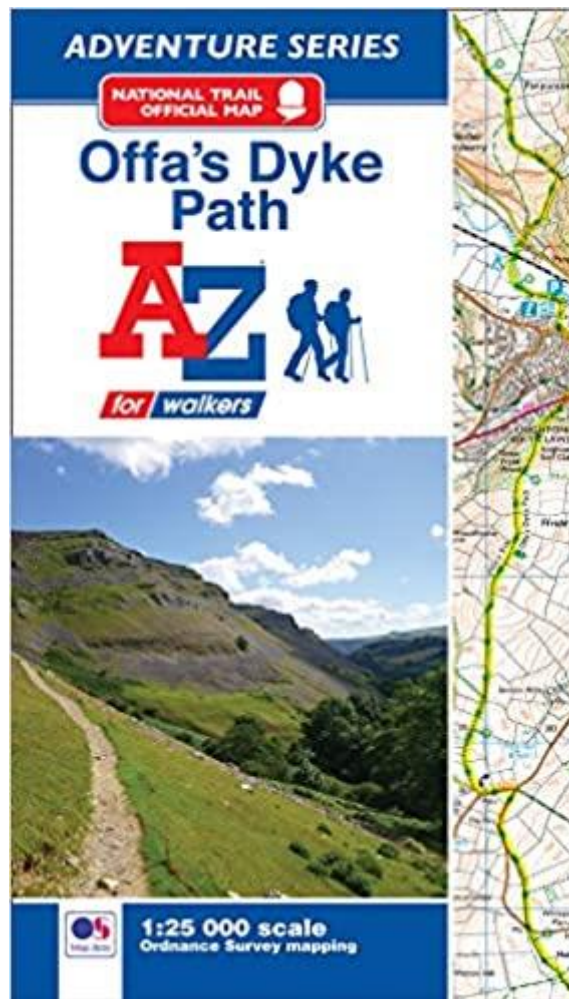
OFFA'S DIKE ASSOCIATION: <https://offasdyke.org.uk/>

Long Distance Walker Association's Offa's Dike Page: [LDWA - Offa's Dike Path](#)

Books & Maps Used



Offa's Dike Path British Walking Guide by Trailblazer



Offa's Dike Path A-Z Adventure Atlas by Ordnance Survey